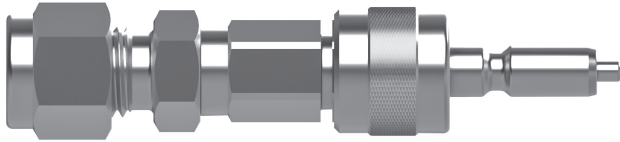


# QC Series Quick-Connects Maintenance Instructions

## Double-End Shutoff (DESO) Stem



These instructions detail rebuilding the DESO valve stem.

## Kit Contents

### Rebuild Kit

- Valve stem (with O-ring)
- Spring
- Retainer
- Stem Adapter O-ring

### Seal Kit

- DESO O-ring
- Stem Adapter O-ring

## Tool Requirements

### For DESO Stem

- Locking pliers or bench vise
- Small flat-blade screwdriver
- Torque wrench capable of measuring up to 20 in.·lb (2.3 N·m) of torque



### WARNING

Before servicing any installed quick-connect, you must:

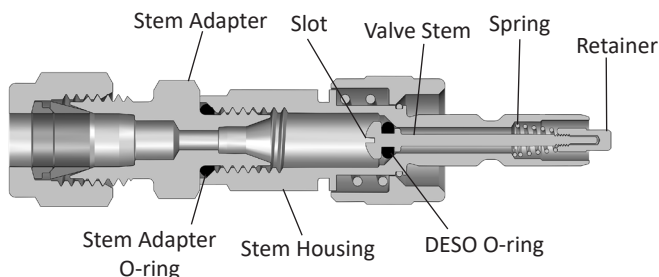
- Depressurize the system
- Cycle the quick-connect
- Purge the quick-connect



### WARNING

Do not mix or interchange kit parts with those of other manufactures. Rebuild kit parts are not interchangeable. Leakage or blockage may occur.

## Cutaway View of the DESO Stem



## Rebuilding the DESO Stem (Rebuild Kit)

Refer to the Cutaway View while following the instructions.

### Disassembly

1. Grip the stem adapter in bench vise.
2. Unscrew the stem housing from the stem adapter.
3. Remove the O-ring from the stem adapter with a small pick and discard the O-ring.
4. Grip the end of the retainer with locking pliers or bench vise and hold firmly.
5. Insert a screwdriver into the slot in the opposite end of the valve stem and turn counterclockwise to remove the valve stem. Discard the valve stem and O-ring.
6. Remove the retainer and the spring. Discard both components.

### Reassembly

**NOTE: Lubricate all new O-rings with a system compatible Lubricant.**

1. Ensure the DESO O-ring is installed on the new valve stem.
2. Place the new valve stem into the stem housing. Hold the valve stem in place with a screwdriver inserted into the slot in the end of the valve stem.
3. Install the new spring into the opposite end of the stem housing.
4. Thread the new retainer onto the valve stem.
5. Hold the retainer with the locking pliers and tighten to the torque value listed below.
6. Install the new Stem Adapter O-ring onto the stem adapter.
7. Thread the stem housing onto the stem adapter and tighten to the torque value shown in the tables below.

Quick-Connect Size	Torque Value, in.·lb (N·m)	
	Brass	Stainless Steel
1/4 in.	0.5 (0.06)	1.1 (0.12)
3/8 in.	4.25 (0.48)	13 (1.47)
1/2 in.	7.0 (0.79)	13 (1.47)

8. Test the DESO stem for proper operation and leak-tight performance.

## Replacing the DESO O-ring and Stem Adapter O-ring (Seal Kit)

Refer to the Cutaway View while following the instructions.

### Disassembly

1. Follow steps 1 through 6 of the Disassembly section for the DESO stem. Do not Discard the retainer, spring or valve stem.
2. Remove the DESO O-ring from the valve stem with a small pick and discard.

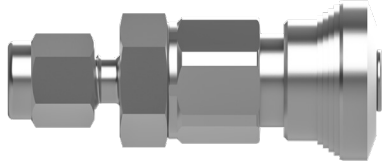
### Reassembly

**NOTE: Lubricate all new O-rings with a system compatible Lubricant.**

1. Install the DESO O-ring into the groove on the valve stem.
2. Follow steps 2 through 8 of the reassembly section for the DESO stem.

## QC Series Quick-Connects

### Body



These instructions detail rebuilding the QC Series body.

### Kit Contents

- Stem O-ring
- Insert O-ring
- Body Adapter O-ring
- Body Valve (with O-ring)
- Valve Spring

### Tool Requirements

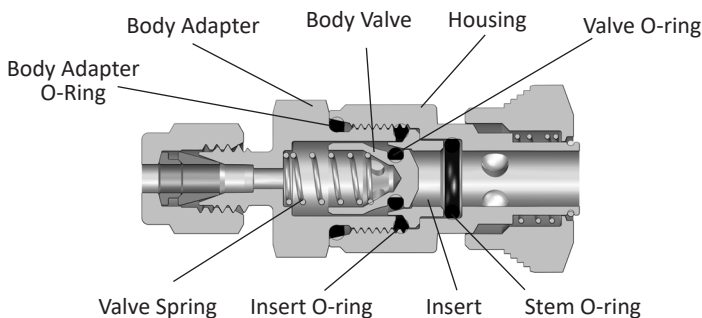
- Wrench
- Bench vise
- Torque wrench capable of measuring up to 400 in.·lb (45.2 N·m) of torque

**WARNING**  
Before servicing any installed quick-connect, you must:

- Depressurize the system
- Cycle the quick-connect
- Purge the quick-connect

**WARNING**  
Do not mix or interchange kit parts with those of other manufactures. Rebuild kit parts are not interchangeable. Leakage or blockage may occur.

### Cutaway View of the Body



## Rebuilding the Body

Refer to the Cutaway View while following the instructions.

### Disassembly

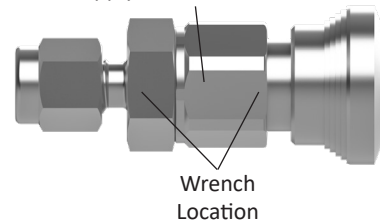
1. Grip the body adapter in bench vise.
2. Unscrew the housing from the body adapter.
3. Remove the valve spring and body valve.
4. Remove the Insert O-ring from the housing with a small pick and discard.
5. Remove the insert and Stem O-ring with a small pick and discard.
6. Remove the Body Adapter O-ring from the body adapter with a small pick and discard.

### Reassembly

**NOTE: Lubricate all new O-rings with a system compatible Lubricant.**

1. Install the new Body Adapter O-ring onto the body adapter.
2. Install the new Stem Seal O-ring into the body housing.
3. Install insert into body housing flared end up.
4. Install the new Insert O-ring, pressing radially to ensure proper installation of O-ring.
5. Place the new body valve into the body housing.
6. Place the new valve spring into the body valve.
7. Thread the housing onto the body adapter and tighten to the torque value shown in the tables below.

Do **not** apply a wrench to this location.



Quick-Connect Size	Torque Value, in.·lb (N·m)	
	Brass	Stainless Steel
1/4 in.	150 ± 10 (16.9 ± 1.1)	
3/8 in.		
1/2 in.		

8. Test the body for proper operation and leak-tight performance.