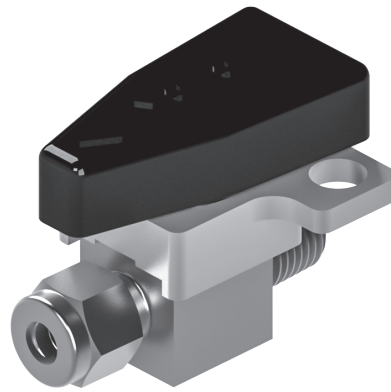


Installation Instructions

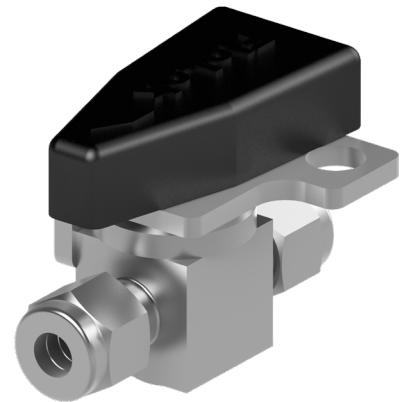
Plug Valve Locking Kit

WARNING
If the valve is disconnected from a system for installation, it must be depressurized, cycled, and purged.




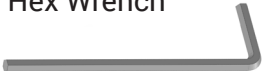
WARNING
To be used with padlock shackle diameters of 1/4" to 5/16" only.



LDK Assembly



LDSSK Assembly

Version	Contents	Tools Required
LDK	<ul style="list-style-type: none"> • Installation Instructions • Locking Device (Aluminum) 	<ul style="list-style-type: none"> • 3/32" Hex Wrench 
LDSSK	<ul style="list-style-type: none"> • Installation Instructions • Locking Device Plate • Locking Device Spacer • Set Screws (2) 	<ul style="list-style-type: none"> • 5/64" Hex Wrench • 3/32" Hex Wrench 

LDK Instructions

1. Loosen handle set screw using a 3/32" hex wrench (figure 1).
2. Remove handle from valve.
3. Place locking device on valve. Orient locking device notch with valve stop pin (figure 2).
4. Replace valve handle and tighten handle set screw.
5. Test valve for proper operation.

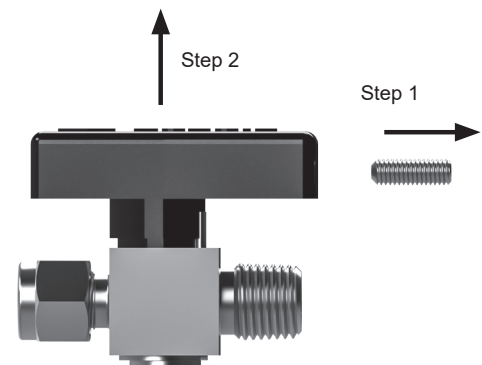


Figure 1

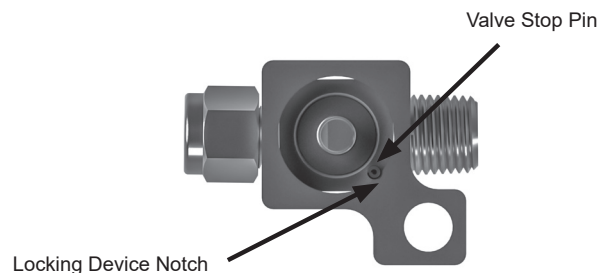
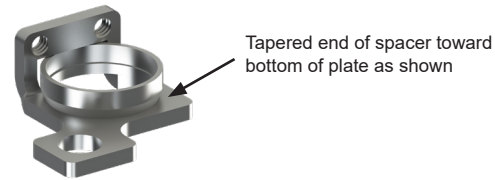


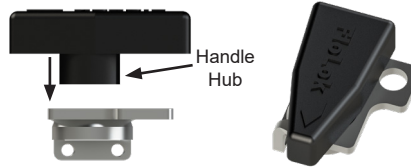
Figure 2

LDSSK Instructions

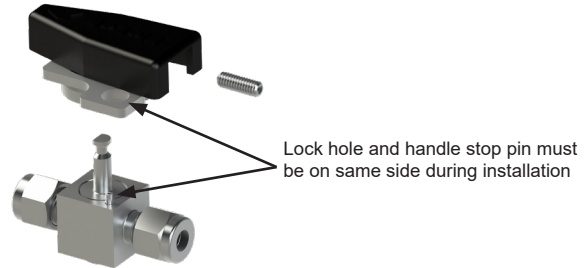
1. Nest the locking device spacer into the locking device plate.



2. Insert handle hub into the locking device sub-assembly from previous step. Orient handle tail to lock hole as shown.



3. Place locking handle sub-assembly onto stem of plug and install the set screw into the handle using a 3/32" hex wrench so that it attaches the handle to the plug



4. Install locking device set screws into locking device plate using a 5/64" hex wrench and lightly tighten until screws contact body and are even.

(Do not over-tighten set screws)



Note: Screws may be preinstalled in locking device plate