

SSP



# QUICK < REFERENCE > GUIDE





At SSP, we are proud to be an American manufacturing success story.

### 100% of our products are made in America.

All of our manufacturing is performed in our 165,000 sq. ft. facility located near Cleveland, Ohio. Our facility is the largest vertically integrated, single-site operation in the industry. In addition to manufacturing and assembly, we have closed die forging, tool & die design, product development and testing operations under the same roof with the customer service and executive teams.

### Made in America is good business.

Not only do we make everything in America, we use American suppliers too. Buying American allows us to have better quality control and a more reliable supply chain. We can work more closely within our walls and with our suppliers to improve quality, reduce costs, and shorten lead times, which means faster service and better products for you.

**Support where it counts.** SSP products and services are supported by more than 4000 people and 350 distributor locations around the globe. For a distributor near you, contact SSP Customer Service or visit [www.mySSPusa.com](http://www.mySSPusa.com)

# Valves

Note: This publication contains standard product information. For more options, see the full catalog for each product, contact your local SSP distributor or SSP Customer Service.

## Locked Bonnet Needle Valves LN and HLN Series

- M.A.W.P.**  
 › 10,000 psig (689 bar)  
**Temperature**  
 › -100 to 1200°F (-73 to 648°C)  
**Flow Coefficient**  
 › Up to 2.18  
**Materials**  
 › Body: 316 SS, Alloy 400, Alloy C-276  
 › Packing: PTFE, PEEK, Grafoil  
 › Stems: Vee, Soft-Seal, Regulating, Metering  
**End Connections**  
 › 1/8 to 1 in. TF, NPT, BSPT, SAE, SW (6 to 12 mm TF only)



## Rising Plug Needle Valves LP Series

- M.A.W.P.**  
 › 6000 psig (413 bar)  
**Temperature**  
 › -65 to 600°F (-53 to 315°C)  
**Materials**  
 › Body: 316 SS, Alloy 400  
 › Packing: PTFE, PEEK  
 › Seat: Acetyl, PEEK, PFA  
**End Connection**  
 › Sizes: 1/4, 1/2 and 3/4 in. inlet;  
 1/4 & 1/2 in outlet  
 › Types: NPT



## Needle Gauge Valves LNG Series

- M.A.W.P.**  
 › 6000 psig (413 bar)  
**Temperature**  
 › -100 to 1200°F (-73 to 648°C)  
**Materials**  
 › Body: 316 SS, Alloy 400, Alloy C-276  
 › Packing: PTFE, PEEK, Flexible Graphite  
 › Stems: V, Soft-Seal, Regulating, Metering  
**End Connection**  
 › Sizes: 1/4, 1/2 and 3/4 in. inlet;  
 1/4 & 1/2 in outlet  
 › Types: NPT, Tube Socket Weld



## Integral Bonnet Needle Valves 100 & 600 Series

- M.A.W.P.**  
 › 6,000 psig (413 bar)  
**Temperature Range**  
 › -40°F to 600°F (-40°C to 315°C)  
**Materials**  
 › Body: 316 SS, Brass  
 › Packing: PTFE, PEEK  
 › Stems: 316 SS, PCTFE  
**End Connection Sizes**  
 › 1/8 to 1/2 in. (6 to 12 mm TF)  
**Options:**  
 › Tee and knurled handles







## Metering Valves 500 Series

### M.A.W.P.

› 6,000 psig (413 bar)

### Temperature

› -40°F to 600°F (-40°C to 315°C)

### Materials

- › Body: 316 SS, Brass
- › Stems: 10", 2" (optional)
- › Packing: PTFE, PEEK

### End Connections

- › Size: 1/8 to 1/2 in. (6 to 12 mm TF)
- › Type: Tube fitting, NPT, BSPT
- Orifice Sizes:** 0.047 to 0.375 in.

## Toggle Valve 200 Series

### M.A.W.P.

› 200 psig (13.8 bar)

### Temperature Range

› -20°F to 200°F (-28°C to 93°C)

### Materials

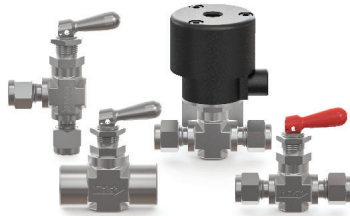
› 316 SS, Brass

### End Connection Sizes

› 1/8 to 3/8 in.

### Options:

- › Pneumatic Actuation, Colored Handles, Anti-Lock Handles



## Encapsulated Ball Valves EB Series

### M.A.W.P.

› 3000 psig (206 bar)

### Temperature

› -65 to 300°F (-53 to 148°C)

### Materials

- › Body: 316 SS, Alloy 400, Alloy C-276, Brass
- › Seat: PTFE

### End Connections

- › Sizes: 1/16 to 3/4 in. (3 to 12 mm)
- › Types: Tube Fitting, NPT, BSPT

### Options

- › Actuators, locking, colored handles, vents

## Multipurpose Ball Valves FB Series

### M.A.W.P.

› 6000 psig (413 bar)

### Temperature

› -40 to 400°F (-40 to 206°C)

### Materials

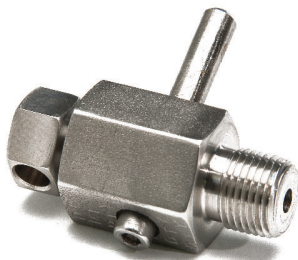
- › Body: 316 SS; Alloy 400, Alloy C-276
- › Seat: PEEK and PTFE
- › Seals: FKM, Low-Temp Nitrile, FFKM

### End Connections

- › Sizes: 1/4 to 1 in. (6 to 16 mm TF only)
- › Types: Tube Fitting, NPT, BSPT, ORFS

### Options

- › Actuators, locking devices, colored handles



## Bleed Valves BV Series

### M.A.W.P.

› 10,000 psig (689 bar)

### Temperature Range

› -65 to 850°F (-53 to 454°C)

### Materials

› 316 SS, Alloy 400

### End Connections

- › Sizes: 1/8 to 1/2 in.
- › Types: Male NPT and BSPT
- Options**
- › Tee handle, tube stub and barbed vents



## Trunnion Ball Valves TB Series

### M.A.W.P.

› 10,000 psig (689 bar) though all ports

### Temperature Range

› -40°F to 450°F (-40°C to 232°C)

### Materials

- › Body: 316 SS, Alloy 400
- › Seats: PCTFE, PEEK

### End Connections

- › Types: Tube Fitting, FNPT, BSPT, SAE
- › Sizes: 1/8 to 1/2 (6 to 12 mm tube fitting)

### Options

- › 2-way and 3-way valves
- › Locking device, actuators, colored handles

## Purge Valve 4900 Series

### M.A.W.P.

› 6,000 psig (413 bar)

### Temperature Range

› -65°F to 600°F (-54°C to 315°C)

### Materials

› 316 SS, Brass

### End Connection

› Sizes 1/8 to 1/2 in.

- › Types: Tube Fitting, Tube Stub, NPT, BSP, SAE

### Options

- › PTFE poppet
- › Wide range of shapes, ends and sizes



## Ball Valve, General Utility 300 Series

### M.A.W.P.

› 5,000 psig (345 bar)

### Temperature Range

› -40°F to 350°F (-40°C to 176°C)

### Materials

- › Body: 316 SS, Brass
- › Seats: PCTFE, PTFE

### End Connections

- › Sizes: 1/8 to 3/4 in. (6 to 12 mm TF only)
- › Types: Tube Fitting, NPT

### Options

- › 2-way and 3-way valves
- › Mixed end size/type, locking devices



## Plug Valves PV Series

### M.A.W.P.

› 3,000 psig (206 bar)

### Temperature Range

› -10°F to 400°F (-23°C to 204°C)

### Materials

- › 316 SS, Brass
- › Seals: FKM, Nitrile, EPDM, Neoprene, Kalrez®

### End Connections

- › Sizes: 1/8 to 1/2 in. (6 to 12 mm TF)
- › Types: Tube Fitting, NPT, BSPT

### Options

- › Vented valves, locking devices

**NEW!**



## Pneumatic Actuators

### EB, TB & FB Series Ball Valves

- › Normally Open, Normally Closed, Double Acting, Dual Acting
- › 90° and 180° actuation

### Options & Accessories

- › Standard, High and Low Temperature
- › Solenoids, limit switches, and position sensors
- › Anodize Aluminum, Corrosion Resistant Coatings and Stainless Steel Housings.

**NEW!**



## Proportional Relief Valves R-Series

### M.A.W.P.

- › RH Series: 6,000 psig (413 bar)
- › RL Series: 300 psig (20.6 bar)

### Set Pressure

- › RH Series: 6,000 psig (415 bar)
- › RL Series: 225 psig (15.5 bar)

### Temperature Range

- › -40°F to 300°F (-40 to 148°C)

### Materials

- › 316 SS

- › Seals: FKM, Nitrile, EPDM, FFKM

### End Connections

- › Sizes: 1/4 & 1/2 in. (6, 8 & 12mm TF only)

## Check Valves CH Series

### M.A.W.P.

- › 6,000 psig (413 bar)

### Temperature Range

- › -40°F to 400°F (-40°C to 204°C)

### Cracking Pressure

- › 1/3 to 25 psig (0.02 to 1.7 bar)

### Materials

- › 316 SS, Alloy 400, Alloy C-276

- › Seals: FKM, Nitrile, EPDM, Kalrez®

### End Connections

- › Sizes: 1/8 to 1 in. (6 to 12mm TF only)
- › Types: Tube Fitting, NPT, BSPT



## Check Valves CP/CPA Series

### M.A.W.P.

- › 3,000 psig (206 bar)

### Temperature Range

- › -50° to 375° F (-45 to 190°C)

### Cracking Pressure

- › Fixed 1/3 to 25 psig (0.2 to 1.7 bar)
- › Adjustable: 3 to 600 (0.2 to 41.3)

### Materials

- › Body: 316 SS, Brass

- › Seals: FKM, Nitrile, EPDM, Kalrez®

### End Connection

- › Sizes: 1/4 to 1/2 in.
- › Types: NPT, BSPT



## Ball Check Valve 4000 Series

### M.A.W.P.

- › 6,000 psig (413 bar)

### Temperature Range

- › -15°F to 350°F (-26°C to 176°C)

### Cracking Pressure

- › 1/3 to 50 psig (0.2 to 3.4 bar)

### Materials

- › Body: 316 SS, Alloy 400, Brass

- › Seals: FKM, Nitrile

### End Connection

- › Sizes: 1/8 to 1/2 in.
- › Types: Tube Fitting, NPT, BSPT



## Lift Check Valve LC Series

### M.A.W.P.

- › 6,000 psig (413 bar)

### Temperature Range

- › -100°F to 900°F (-73°C to 482°C)

### Materials

- › Body: 316 SS, Alloy 400

### End Connection

- › Sizes: 1/8 to 3/4 in. (6 to 12 mm TF)
- › Types: Tube Fitting, NPT, BSP, Tube Socket Weld



# Tools, Couplings & Filters



## TurnPro Tools

- › Tube Benders
- › Tube Cutters
- › Ratchet Wrenches
- › Pre-Swaging Tools
- › Reaming & Deburring Tools
- › PTFE Thread Tape
- › Hydraulic Swaging Tools
- › Benchtop Coiled Tube Straightener
- › PTFE Thread Tape
- › Depth Marking Tools
- › Gap Gages
- › Tube Fitter's Bag

## Quick Connects QF Series

### M.A.W.P.

- › 6,000psig (413 bar)

### Temperature Range

- › -40°F to 400°F (-40°C to 204°C)

### Materials

- › Body: 316 SS, Brass

- › Seals: FKM, Nitrile, EP

### End Connections

- › Sizes: 1/4 to 1 in.
- › 6mm (Tube Fitting Only)
- › Types: Tube Fitting, NPT, BSPT, BSPP



## Quick Connectors QC Series

### M.A.W.P.

- › 3,000 psig (206 bar)

### Temperature Range

- › -40°F to 400°F (-40°C to 204°C)

### Materials

- › Body: 316 SS, Brass

- › Seals: FKM, Nitrile, FFKM

### End Connections

- › Sizes: 1/4 to 1/2 in.

- › Types: Tube Fitting, NPT

### Options

- › Colored Key, Caps, Layards, Bulkhead bodies



## Inline and Tee Filter 3100 & 3000 Series

### M.A.W.P.

- › 5,000 psig (345 bar)

### Temperature Range

- › -20°F to 350°F (-28°C to 176°C)

### Materials

- › 316 SS, Brass

### End Connections

- › Sizes: 1/8 to 1/2 in. (6 to 12 mm TF)

- › Types: Tube Fitting, NPT

### Filter Sizes

- › Sintered: 1 to 200µm
- › Mesh: 140 & 400µm





# Tube & Pipe Fittings

Note: This publication contains standard product information. For more options, see the full catalog for each product, contact your local SSP distributor or SSP Customer Service.



## Duolok® Double Ferrule Fittings

### M.A.W.P.

› 12,100 psig (834 bar) at 100°F (38°C)

### Temperature Range

› -325°F to 1200°F (-198°C to 648°C)

### Materials

› 316 SS, brass, carbon steel, Alloy 400, Alloy C-276

### Sizes

› 1/16 to 2 in. (3mm-25mm)

## Unilok® Single Ferrule Fittings

### M.A.W.P.

› 12,100 psig (834 bar) at 100°F (38°C)

### Temperature Range

› -325°F to 1200°F (-198°C to 648°C)

### Materials

› 316 SS, brass, carbon steel, Alloy 400, Alloy C-276

### Sizes

› 1/16 to 1 in.



## Griplok® Dual Ferrule Fittings

### M.A.W.P.

› 12,100 psig (834 bar) at 100°F (38°C)

### Temperature Range

› -325°F to 1200°F (-198°C to 648°C)

### Materials

› 316 SS, brass

### Sizes

› 1/16 to 1 in.



## TruFit® Pipe, Weld and Adapter Fittings

### M.A.W.P.

› 10,000 psig (690 bar)

### Temperature Range

› -425°F to 1200°F (-254°C to 648°C)

### Materials

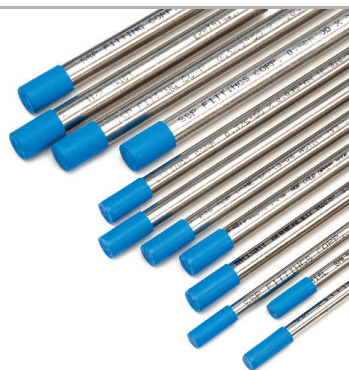
› 316 SS, Alloy 400, Alloy C-276, brass

### Sizes

› 1/16 to 2 in.



# Tubing & Hose



## Seamless 316/316L Stainless Steel Tubing

### Sizes

› 1/4 to 1 in. OD (6 to 25 mm OD)

› 0.035 to 0.134 (1 to 2.5 mm) wall thicknesses

### Features

› Working pressures printed on the tube  
› Capped ends: cleanliness & protection  
› Hardness < 80 Rockwell  
› Fully traceable – MTRs available

## Seamless 316/316L Coiled Tubing

### Sizes

› 1/4 to 1/2 in. OD

› 0.035 to 0.065 wall thicknesses

› Lengths up to 2300 ft.

### Features

› OD Tolerance: +0.005/-0.000 in.  
› Corrosion Resistance: > 2.5% Molybdenum  
› Straightening tools available



## TruFit® PTFE Hose Assemblies

### M.A.W.P.

› 3,000 psig (200 bar)

### Temperature Range

› -65°F to 400°F (-54°C to 204°C)

### Materials

› 316 SS fittings; Hose: 304 wire braid, DuPont 62 fine grade resin teflon core

### Sizes

› 1/4 to 1 in.



## TruFit® All-Metal Hose Assemblies

### M.A.W.P.

› 3,100 psig (214 bar)

### Temperature Range

› -325°F to 1200°F (-198°C to 648°C)

### Materials

› 316/321 SS wire braid & core

### Sizes

› 1/4 to 2 in.





Founded 1926

Privately owned, third generation business

Modern single-site vertically integrated manufacturing facility

DFARS-compliant raw material

ISO 9001 quality management system

Limited Lifetime Warranty



8250 Boyle Parkway • Twinsburg, OH 44087  
330-425-4250 • [www.mySSPusa.com](http://www.mySSPusa.com)

©2018 SSP Corporation. All rights reserved.

ILQRG-18A